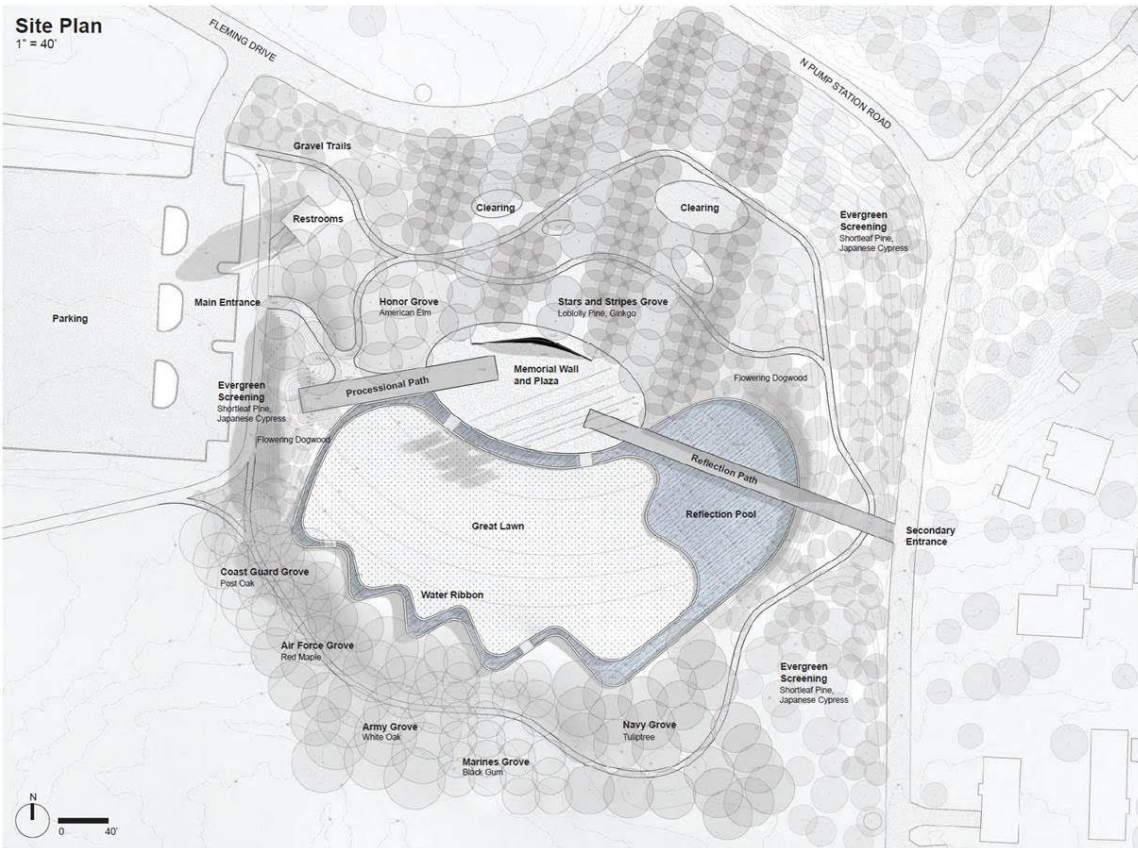


SPRINGDALE VETERANS MEMORIAL PARK



Site Plan

1" = 40'



Planting Strategy

Trees Canopy, Deciduous

- Acer rubrum* Red Maple (Ar Forest Grove)
- Ginkgo biloba* Ginkgo (Stars and Stripes Grove)
- Liriodendron tulipifera* Tuliptree (Navy Grove)
- Nyssa sylvatica* Black Gum (Merrill Corps Grove)
- Quercus alba* White Oak (Army Grove)
- Quercus stellata* Post Oak (Coast Guard Grove)
- Ulmus americana* American Elm (Honor Grove)

Trees Canopy, Evergreen

- Chamaecyparis obtusa* Japanese Cypress
- Pinus echinata* Shortleaf Pine
- Pinus taeda* Loblolly Pine (Stars and Stripes Grove)

Trees Understory

- Cornus florida* Flowering Dogwood

Herbaceous and Bulb Mixes

Mix A

- Dryopteris Pycnanotoides* Japanese Wood Fern
- Osmundastrum cinnamomeum* Cinnamon Fern
- Tulipa 'Maarsden'* Tulip

Mix B

- Actaea racemosa* Black Cohosh
- Luzula sylvatica* Greater Wood Rush
- Narcissus 'Rose of May'* Daffodil

Mix C

- Actaea racemosa* Black Cohosh
- Amsonia tabernaemontana* Blue Star
- Narcissus 'Rose of May'* Daffodil
- Pachysandra terminalis 'Silver Edge'* Japanese Spurge

Mix D

- Achillea millefolium 'Pomgranate'* Yarrow
- Pachysandra terminalis 'Silver Edge'* Japanese Spurge
- Tulipa 'Pallada'* Tulip

Mix E

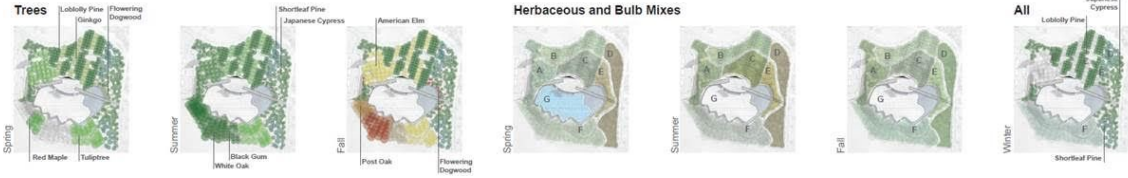
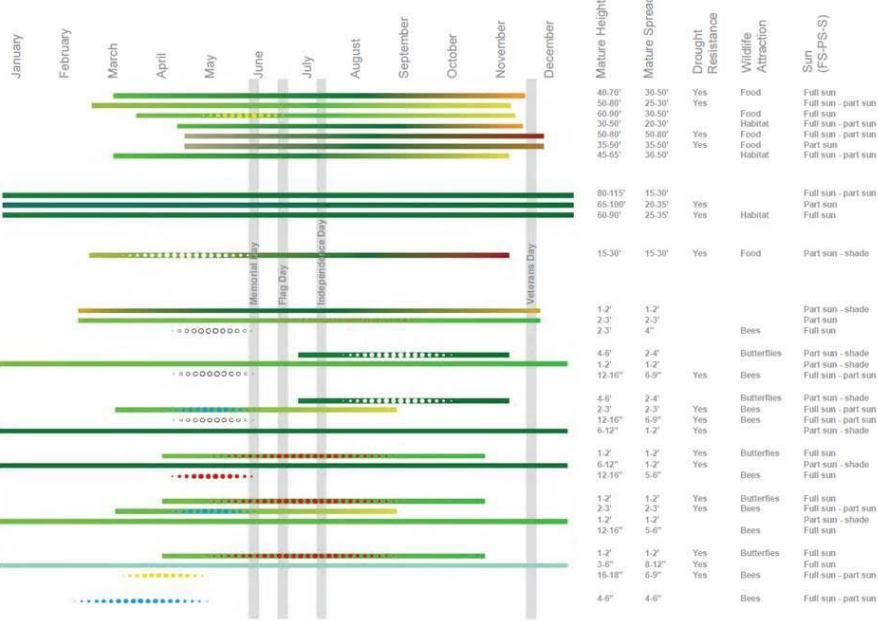
- Achillea millefolium 'Pomgranate'* Yarrow
- Amsonia tabernaemontana* Blue Star
- Luzula sylvatica* Greater Wood Rush
- Tulipa 'Pallada'* Tulip

Mix F

- Achillea millefolium 'Pomgranate'* Yarrow
- Artemisia schmidtiana 'Nana'* Wormwood
- Narcissus 'Ice Follies'* Daffodil

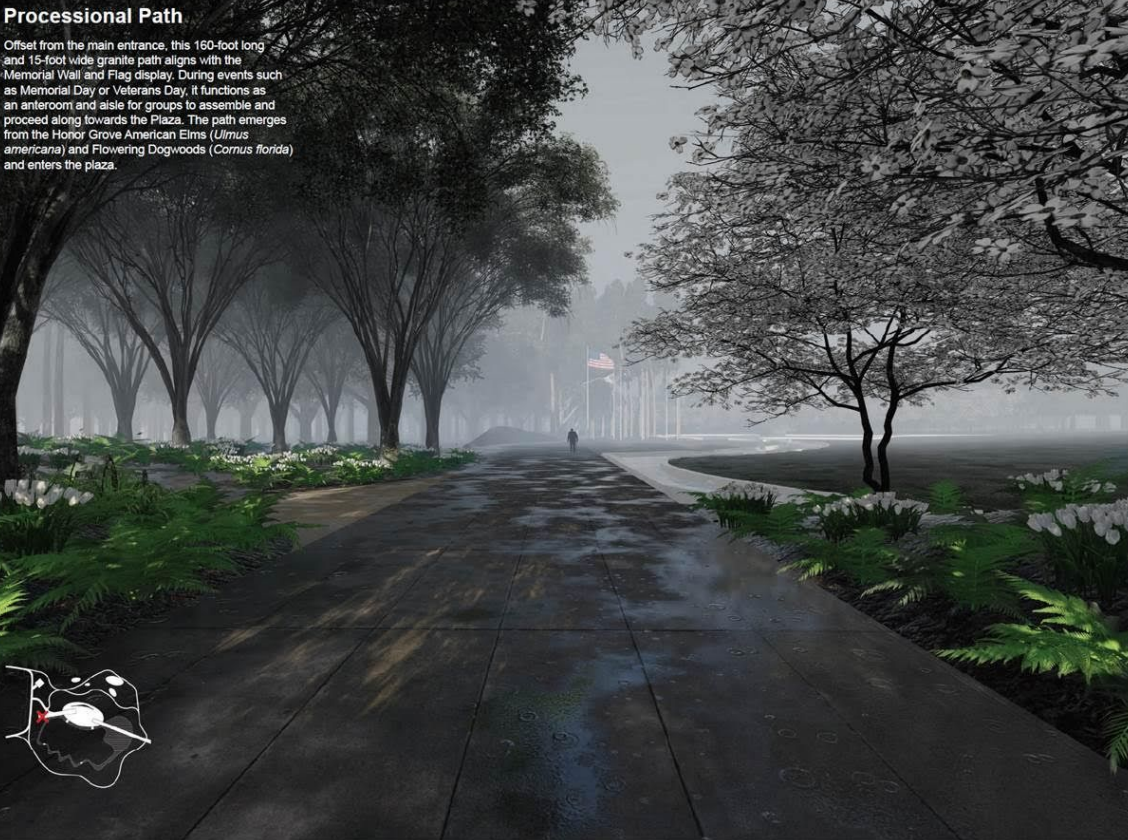
Mix G

- Scilla sibirica 'Spring Beauty'* Siberian Squill



Processional Path

Offset from the main entrance, this 160-foot long and 15-foot wide granite path aligns with the Memorial Wall and Flag display. During events such as Memorial Day or Veterans Day, it functions as an anteroom and aisle for groups to assemble and proceed along towards the Plaza. The path emerges from the Honor Grove American Elms (*Ulmus americana*) and Flowering Dogwoods (*Cornus florida*) and enters the plaza.



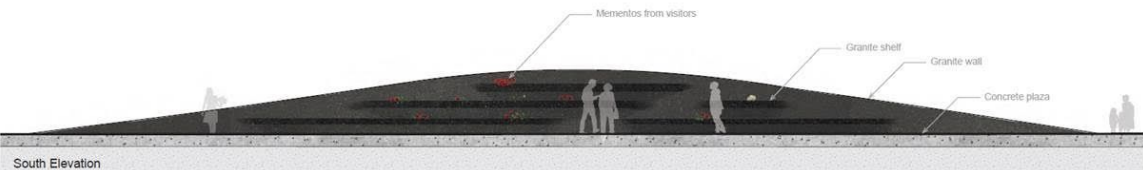
Honor Grove

Nestled among Cinnamon Ferns (*Osmunda cinnamomea*) and white Tulips (*Tulipa Meurseri*), and beneath the cathedral-like branching of a grid of 28 American Elms (*Ulmus americana*), are bronze plaques, each attached to a stake inserted into the ground. These plaques can generate revenue, as donors will be able to purchase one and have a name engraved on it. A series of trails (an extension of J.B. Hunt Park's multipurpose recreational pathways) winds through the groves.



Memorial Wall and Plaza

The focal point of the park is a dark granite wall that slopes from the ground level to a height of six feet. The wall serves as a destination for park visitors and as a backdrop for special events. The front face of the wall contains ledges that form a "scaffold" for the collection of mementos from visitors. The back side of the wall, which reaches nearly eight feet in height because of a downward sloping accessible pathway, features names of veterans etched into the granite and a supersized non-chronological tapestry illustrating Springdale's involvement in the military. The 14,000 square foot accessible concrete plaza can comfortably hold over 200 folding chairs.



South Elevation



North Elevation

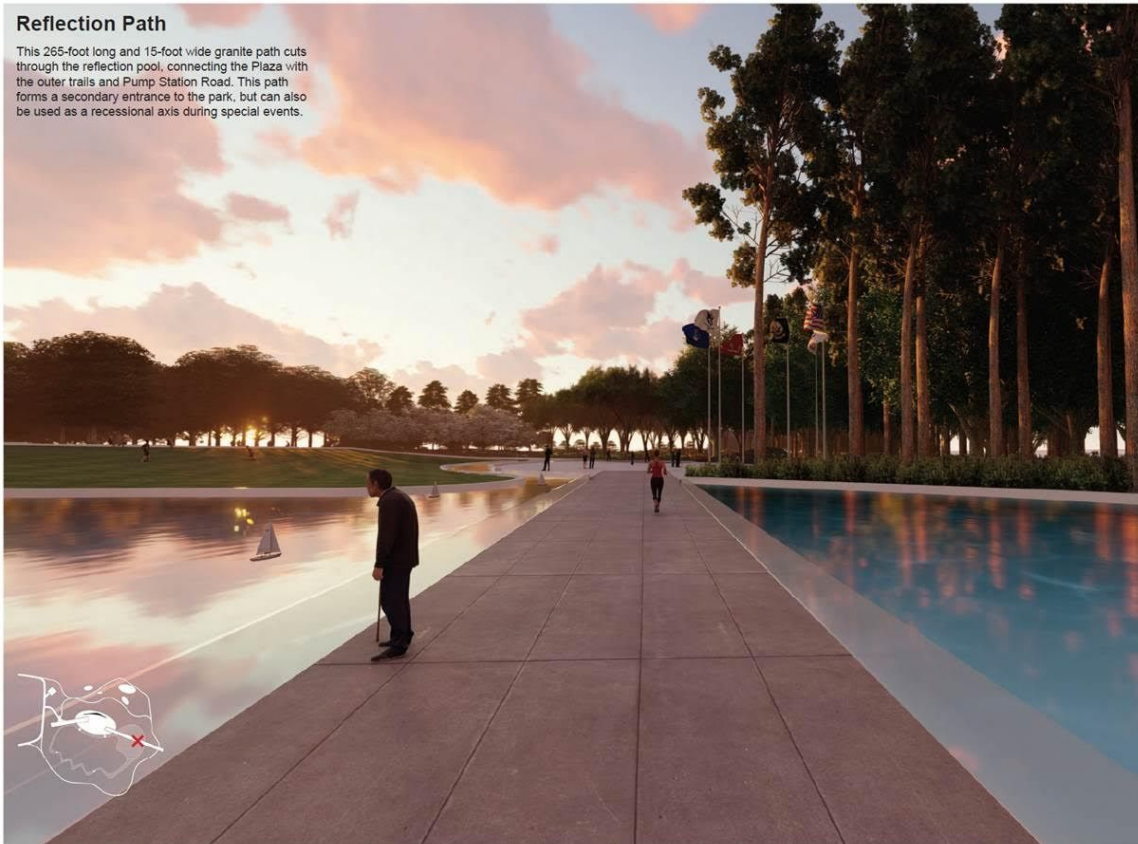
Memorial Wall Detail

Emerging from the banked face of the wall, a series of six-inch ledges invites visitors to leave mementos, thereby creating a living, changing, unique memorial display.



Reflection Path

This 265-foot long and 15-foot wide granite path cuts through the reflection pool, connecting the Plaza with the outer trails and Pump Station Road. This path forms a secondary entrance to the park, but can also be used as a recessional axis during special events.



View from a Clearing

Four clearings that range from 250 to 2,400 square feet create opportunities for rest along the outer trails, open up views towards the Memorial Wall and Plaza, and frame views of the sky above.



Groves Through the Seasons

Alternating rows of Loblolly Pines (*Pinus taeda*) and Ginkgo (*Ginkgo biloba*) make up the Stripes and Groves. During the fall, the Ginkgo leaves turn bright yellow, and fall off suddenly, creating a striking effect with the contrasting tall and narrow evergreen pines.



Summer



Fall



Winter

Branches of the Armed Forces

Five distinct groves of trees are dedicated to each branch of the military. These groves are framed by curvatures in the water ribbon, which provides opportunities for seating, contemplation, and views across the site. The park's surrounding trails set away from the core memorial area, allow for simultaneous use by recreational visitors and those seeking a more contemplative experience. Subtle landform manipulations create physical separation between uses while maintaining strong visual connections.

